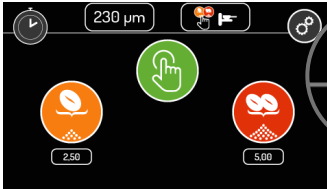


## Instructions for the initial setup of ground coffee dispensing modes

### 1 - "MANUAL" FUNCTION: Manual selection of doses using the display buttons



#### 1. Access the menu

On the HOME screen, select the "menu" button in the top-right corner.

#### 2. Access the technical menu

On the MENU screen, select the "technical menu" button in the bottom-left corner.



#### 3. Disable options

- In the TECHNICAL MENU, select the OFF button to deactivate the "Button" and the "SRP" (Portafilter Recognition System).
- Select the green checkmark in the top-right corner to save.



#### 4. Select the dose

On the HOME screen, the "manual selection" symbol will now appear at the top. To start dispensing, manually select the desired dose: single dose, double dose, or customizable dose (green button).

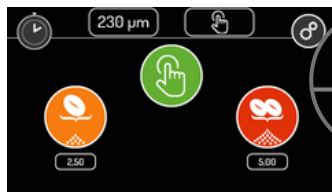


#### \* Stop Dispensing

You can stop dispensing by pressing the button for the selected dose. Pressing the button for the selected dose again will resume the flow until the preset time is completed. You can cancel dispensing entirely by pressing the STOP button.

## 2 - "BUTTON" FUNCTION:

Preselection of the dose and automatic dispensing start when the portafilter is placed

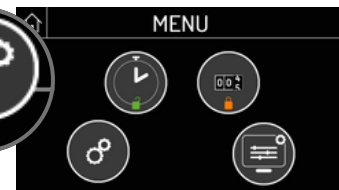


### 1. Access the menu

On the HOME screen, select the "menu" button in the top-right corner.

### 2. Access the technical menu

On the MENU screen, select the "technical menu" button in the bottom-left corner.



### 3. Activate button

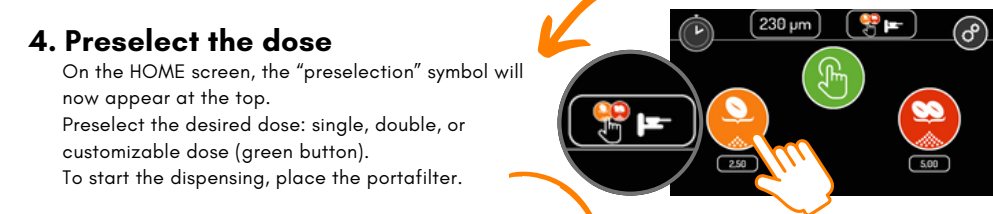
- In the TECHNICAL MENU, select the ON button to activate the "Button" and OFF for the "SRP" (Portafilter Recognition System).
- Select the green checkmark in the top-right corner to save.

### 4. Preselect the dose

On the HOME screen, the "preselection" symbol will now appear at the top.

Preselect the desired dose: single, double, or customizable dose (green button).

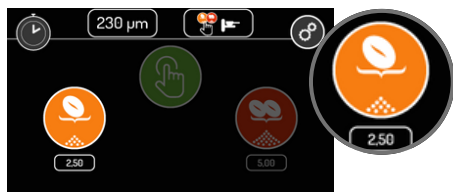
To start the dispensing, place the portafilter.



### 5. Stored dose

The next time the portafilter is inserted, the system will dispense the last stored dose.

To change the dose, select a different option on the display.

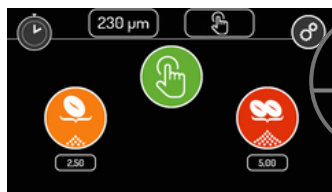


### \* Stop Dispensing

You can stop the dispensing by pressing the button of the selected dose or by removing the portafilter. By pressing the selected dose button again or repositioning the portafilter, the flow will resume until the preset seconds are completed. You can completely cancel the dispensing by pressing the STOP button.

# 3 - "SRP" FUNCTION (PORTAFILTER RECOGNITION SYSTEM):

Recognition of single or double portafilter and automatic start of the corresponding dose



## 1. Access the menu

On the HOME screen, select the "menu" button in the top-right corner.

## 2. Access the technical menu

On the MENU screen, select the "technical menu" button in the bottom-left corner.

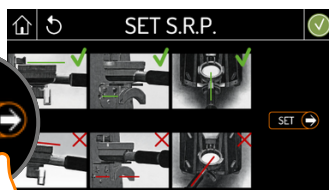
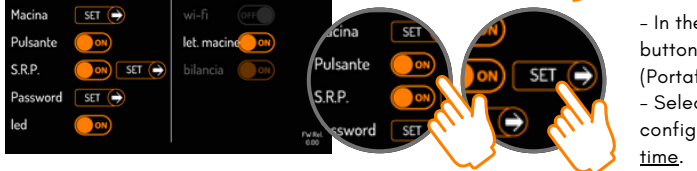


## 3. Activate S.R.P.

- In the TECHNICAL MENU, select the ON button to activate the "Button" and "S.R.P." (Portafilter Recognition System).  
- Select the SET button next to "S.R.P." to configure the portafilters only the first time.

## 4. Access the S.R.P. settings

View the illustrations to correctly position the portafilter on the fork at point 5.  
To access the portafilter configuration settings, select the "SET" button.



## 5. Configure single dose portafilter

- Now correctly position the single dose portafilter on the fork.  
- The symbol for the registered single dose will appear.  
- Remove the single dose portafilter.



## 6. Verify portafilter configuration

- Correctly position the double dose portafilter on the fork.  
- If you have correctly registered the single dose portafilter, the symbol for the double dose will now appear.  
- Remove the double dose portafilter.





### 7. Save the configuration

Select the green checkmark at the top right to save.



### 8. Save the activated options

- In the TECHNICAL MENU, make sure you have selected the ON button to activate the "S.R.P." and the "Button".
- Select the green checkmark at the top right to save.



### 9. Home screen

On the HOME screen, the "portafilter recognition" symbol will now appear at the top. In this mode, it is not possible to manually select the single or double dose.



### 10. Start dispensing

Place the desired portafilter on the fork. The system will recognize the single or double dose portafilter and automatically start dispensing the corresponding dose.

After dispensing the dose, if you wish to add more ground coffee, manually select the customizable dose button (green button). Press the customizable dose button again to stop.



### \* Stop Dispensing

You can stop the dispensing by pressing the button of the selected dose or by removing the portafilter. By pressing the selected dose button again or repositioning the portafilter, the flow will resume until the preset seconds are completed. You can completely cancel the dispensing by pressing the STOP button.

